

# Asbury Day of Service 2015



**Asbury**  
United Methodist Church

***Developing all generations  
for significant lives in Christ.***

**It's a great day at Asbury!**

We're so glad you've joined us today. We hope you'll feel the love of Christ, the warmth of His family...and leave knowing you've heard from God. We strive to provide meaningful praise and relevant teaching each and every service, and offer you a wide variety of opportunities to get plugged in, serve and grow spiritually. This may be your first Sunday at Asbury...but we don't want it to be your last. We invite you to join in what God is doing here.



**8:00 am**  
**Traditional Service**  
in the Chapel



**9:15 am**  
**Traditional Service**  
in the Sanctuary



**11:00 am**  
**Modern Service**  
in the Sanctuary



## Children

**Nursery & Early Childhood**  
Ages 6 weeks to 4 years, first floor  
Hours: 7:45 am–12:00 pm

**Elementary**  
Ages Kindergarten to 6th grade,  
second floor  
Hours: 9:15 or 11:00 am



## Students

**7th–12th Grade**  
9:15 am, in Venue (south of main  
building)  
7th–9th grades, upstairs  
10th–12th grades, downstairs



Asbury  
Day of  
Service

**Thank you  
for serving!**

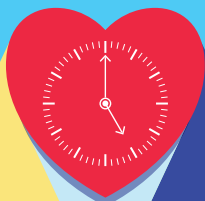
## Background on Day of Service @ Asbury:

- 2011 was the 10th anniversary of 9/11. Asbury desired to be part of the national “I Will” campaign.
- Our response was Day of Service on 9/11/2011.
- Day of Service is a church-wide volunteer effort. We serve once a year on a Sunday afternoon from 2:00 to 5:00 pm. A total of 3 hours of service per volunteer.
  - 2011: 1,784 x 3 hours of service per volunteer = 5,352 hours
  - 2012: 2,109 x 3 hours of service per volunteer = 6,327 hours
  - 2013: 2,238 x 3 hours of service per volunteer = 6,714 hours
  - 2014: 1,859 x 3 hours of service per volunteer = 5,577 hours
  - 2015: 1,647 x 3 hours of service per volunteer = 4,941 hours
  - Total # of volunteers over 5 years of Day of Service = 9,637 volunteers
- Total hours of service over 5 years of Day of Service = 28,911 hours  
*Note: Information from a 11/7/2014 Tulsa Conference on Volunteerism and Service indicated that one volunteer hour is valued at \$22.15.*
- $\$22.15 \times 28,911 = \$640,378$  of volunteer labor into Tulsa through Day of Service
- Asbury spends \$15,000 on this event. Your weekly giving helps make this and other outreaches possible.

## Walk the Prayer Walk 2015–16

Want to enjoy the nice weather, improve your health and change the world—all at the same time? Asbury’s prayer walk utilizes the exterior sidewalks around its building with seven strategically placed signs affecting every aspect of our culture. The walk is perfect for individuals, families, small groups and adult discipleship communities.

**JUST  
A DAY?**



## Current Sermon Series

**October 11:** Living like a servant is not completely safe; sometimes we will suffer for doing what’s right. Unselfish living has risks but it’s worth it because it also has rewards—rewards which may be “postponed” but are never, ever forgotten by the One we serve.



## 2nd Saturday

Join us for 2nd Saturday by arriving at 8:15 am on October 10 at Venue to join in our volunteer rally, hop on a bus to the service location of your choice, and be back by noon. For more information, check us out on Facebook or contact Lanette at [ssaturday@asburytulsa.org](mailto:ssaturday@asburytulsa.org).



**OCTOBER 31  
1:00 TO 4:00 PM**

**FREE**

**TRUNK-OR-TREAT,  
HAYRIDES, GAMES,  
PETTING ZOO,  
FACE PAINTING,  
AND MORE!**

**FOOD TRUCKS  
WITH FOOD  
TO PURCHASE**

Asbury is hosting a Harvest Hayday for our church family and the community. We want hundreds of people to see the fun and the festivities, and feel welcome in joining us.

- Reach out to your neighbors! We've created an "outreach kit" to provide information and ideas to make things easier. Stop by the Harvest Hayday table to get one FREE!
- Put a yard sign in your yard to encourage your friends and neighbors to join us on October 31. The signs are available for \$5.00.
- Pick up a form to sponsor a trunk-or-treat. Details are available at the Harvest Hayday table.

# Next Steps to Joining Asbury

## 1. Attend a Joining Asbury luncheon.

If you are interested in joining Asbury or finding out more about us, please plan to attend one of the Joining Asbury luncheons held monthly.

At the luncheon, you will meet the pastors, find out more about Asbury's vision and hear about worship, growth and influence opportunities that are available to you.

Luncheons will take place on the following dates from 12:15–2:15 pm in the Parlor:

- October 11
- November 8
- December 13

Lunch is provided, and child care is available for 6 weeks to 6th grade. Call **918.392.1191** or register online at [myasburytulsa.org](http://myasburytulsa.org). Walk-ins are welcome.

## 2. Visit with a pastor.

After you attend the Joining Asbury luncheon, visit with a pastor. Sign up sheets are available at the luncheon.

## 3. Schedule to join.

Join on New Member Sunday, which is normally the second Sunday of each month.

The logo for myAsburytulsa features the word "my" in a lowercase, sans-serif font, followed by "Asbury" in a large, elegant, white script font, and "tulsa" in a lowercase, sans-serif font. The entire logo is set against a dark blue background.

Log on to [myasburytulsa.org](http://myasburytulsa.org).

Myasburytulsa.org is a convenient tool that provides the congregation with easy access to event registration, communities, online giving, and preferred communication interests within all areas of Asbury United Methodist Church.

### **Register for events.**

Register for RoadMap Bible classes and events for Asbury, Children's Ministry and Student Ministry.

### **Give securely online.**

Contribute one time or set up a schedule for recurring giving. Electronic checks and debit cards, no credit cards.

# Order of Worship | October 4, 2015

## 8:00 AM

<b>WELCOME</b>		Dr. Guy Ames
<b>PRELUDE</b>		Barbara Graves
<b>CONGREGATIONAL HYMN</b>	<i>O For A Heart To Praise My God</i> Hymn #417	Dr. Pat Calhoun Rhianna Calhoun
<b>CREED / GREETING / NEW MEMBERS</b>		Dr. Guy Ames
<b>CONGREGATIONAL HYMNS</b>	<i>My Hope Is Built</i> Hymn #368  <i>He Touched Me</i>	
<b>SOLO</b>	<i>His Eye Is On The Sparrow</i> Melody Gum	
<b>PASTORAL PRAYER</b>		Dr. Tom Harrison
<b>DOXOLOGY</b>		
<b>OFFERTORY</b>		
<b>SCRIPTURE</b>		<b>Matthew 5:13–16</b>
<b>MESSAGE</b>		<b>Just a Day? Influence Like a Servant</b> Dr. Tom Harrison
<b>SERVICE OF WORD AND TABLE</b>		Dr. Guy Ames
<b>POSTLUDE</b>		

### Daily scripture readings for the upcoming week:

**October 5:** Philippians 2:12–18

**October 6:** Colossians 4:2–6

**October 7:** 2 Corinthians 4:16–18

**October 8:** 2 Corinthians 4:4–11

**October 9:** Galatians 6:7–10

**October 10:** 1 Corinthians 3:10–15

Next Week: ***Just a Day?: It's Worth It***

6767 South Mingo Road, Tulsa, Oklahoma 74133 | [www.asburytulsa.org](http://www.asburytulsa.org) | 918.492.1771



[facebook.com/asburytulsa](https://facebook.com/asburytulsa)



[twitter.com/asburytulsa](https://twitter.com/asburytulsa)

# Order of Worship | October 4, 2015

**9:15 AM**

**PRELUDE**

**CALL TO WORSHIP**

Sean Groombridge

**WELCOME**

Rev. Gloria McGee-Denton

**CONGREGATIONAL HYMNS**

*I Then Shall Live As One  
Who's Been Forgiven*

*Here I Am, Lord*  
Hymn #593

**ANTHEM**

*You Are The Light*

**PASTORAL PRAYER**

Dr. Tom Harrison

**DOXOLOGY**

**OFFERTORY**

**SCRIPTURE**

**Matthew 5:13-16**

**MESSAGE**

**Just a Day?  
Influence Like a Servant**  
Dr. Tom Harrison

**SERVICE OF WORD AND TABLE**

**BENEDICTION**

Dr. Tom Harrison

**POSTLUDE**

Rosanna Corrales

**Connect with our pastor:**

Rev. Gloria McGee-Denton | [gmcgee-denton@asburytulsa.org](mailto:gmcgee-denton@asburytulsa.org)  
[twitter.com/runthehumanrace](https://twitter.com/runthehumanrace)

## Daily scripture readings for the upcoming week:

**October 5:** Philippians 2:12-18

**October 6:** Colossians 4:2-6

**October 7:** 2 Corinthians 4:16-18

**October 8:** 2 Corinthians 4:4-11

**October 9:** Galatians 6:7-10

**October 10:** 1 Corinthians 3:10-15

Next Week: ***Just a Day?: It's Worth It***

6767 South Mingo Road, Tulsa, Oklahoma 74133 | [www.asburytulsa.org](http://www.asburytulsa.org) | 918.492.1771



[facebook.com/asburytulsa](https://facebook.com/asburytulsa)



[twitter.com/asburytulsa](https://twitter.com/asburytulsa)

# Order of Worship | October 4, 2015

**11:00 AM**

## SCRIPTURE

**Matthew 5:13–16**

## MESSAGE

**Just a Day?  
Influence Like a Servant**  
Dr. Tom Harrison

## SONGS HEARD TODAY

*Come Lord Jesus (Even So Come)*  
*In Christ Alone*  
*Broken Vessels (Amazing Grace)*  
*First*

**Worship Pastor:** Jon Odom

**Worship Leader:** Chris Cleveland

### Connect with our pastors:

Jon Odom | [jodom@asburytulsa.org](mailto:jodom@asburytulsa.org) | [twitter.com/jonodom](https://twitter.com/jonodom)

Dick Read | [rdread@asburytulsa.org](mailto:rdread@asburytulsa.org)

### Notes:

## Daily scripture readings for the upcoming week:

**October 5:** Philippians 2:12–18

**October 6:** Colossians 4:2–6

**October 7:** 2 Corinthians 4:16–18

**October 8:** 2 Corinthians 4:4–11

**October 9:** Galatians 6:7–10

**October 10:** 1 Corinthians 3:10–15

Next Week: ***Just a Day?: It's Worth It***

6767 South Mingo Road, Tulsa, Oklahoma 74133 | [www.asburytulsa.org](http://www.asburytulsa.org) | 918.492.1771



[facebook.com/asburytulsa](https://facebook.com/asburytulsa)



[twitter.com/asburytulsa](https://twitter.com/asburytulsa)